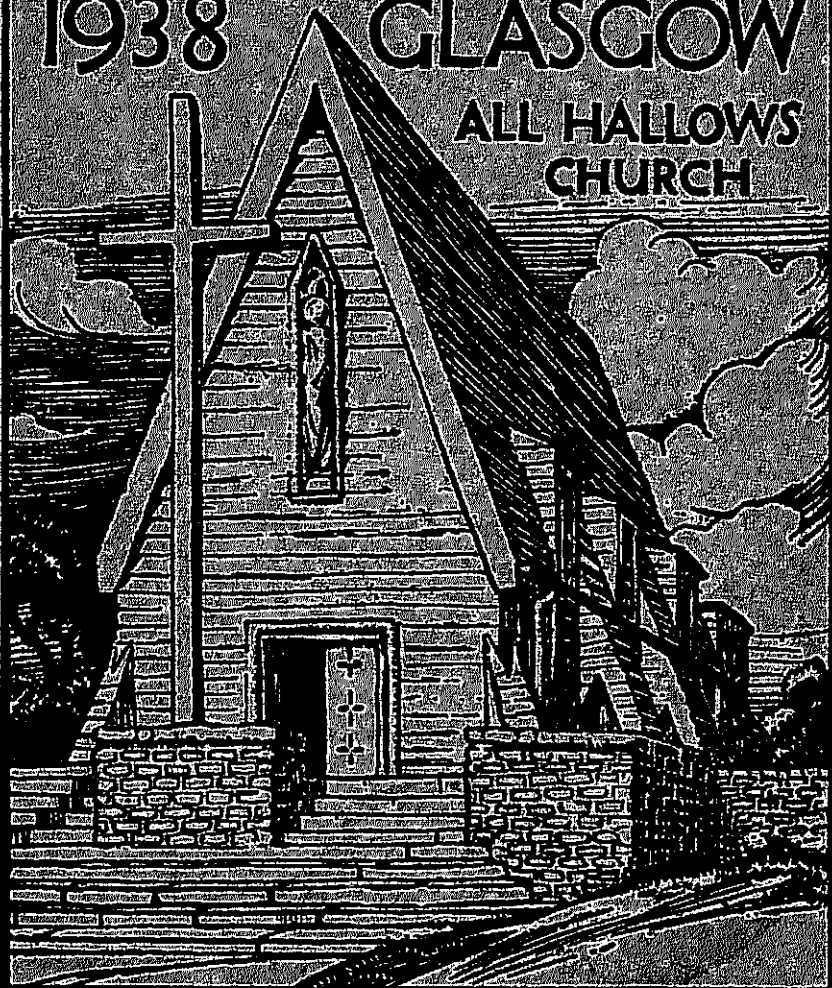


EMPIRE EXHIBITION 1938 GLASGOW

ALL HALLOWS
CHURCH



WITH A LIST OF THE PRINCIPAL
EPISCOPAL CHURCHES in SCOTLAND
AND OF THEIR SERVICES

TO ALL MEMBERS OF THE CHURCH
OF ENGLAND AND THE ANGLICAN
COMMUNION THROUGHOUT THE
WORLD

GREETING



WHILE YOU ARE IN SCOTLAND YOU WILL BE
ABLE TO FIND SERVICES OF YOUR OWN COM-
MUNION IN THE CHURCHES LISTED WITHIN.

This list is not exhaustive, but aims at helping you to find
your own place of worship while in Scotland.

The Episcopal Church in Scotland is in full communion
with the Church of England. It has been disestablished and
disendowed since 1689 and is wholly maintained by voluntary
offerings.

There are seven Dioceses, *viz.*, Aberdeen, Argyll and the
Isles, Brechin, Edinburgh, Glasgow and Galloway, Moray
Ross and Caithness, and St. Andrews Dunkeld and Dunblane.

The Churches noted within are arranged alphabetically, not
according to Dioceses.

The four cities in which there are a number of churches are
given first : Aberdeen, Dundee, Edinburgh, Glasgow.

The principal hours of Service are given, but there may be
variations in some places.

EMPIRE EXHIBITION

GLASGOW, 1938.

SCOTTISH EPISCOPAL CHURCH

The Hall and Chapel of All Hallows at the Glasgow Exhibition has been built by Messrs Speirs, Ltd., Glasgow, to the designs of Mr R. Mervyn Noad, Architect, Glasgow, to whose generous help we are much indebted.

We wish to make the following grateful acknowledgments :—

To Her Most Gracious Majesty the Queen, for the gift of a Prayer Book for the Chapel.

The Glasgow Tree Lover's Society, for the planting and upkeep of the flower beds and trees.

The late Mr Archibald Dawson for the statue of Christ the King.

Miss Evelyn Beale for the Angel above the Sanctuary door.

Miss Olive Carleton Smyth for the Mosaic of St. Margaret.

Mr H. Lewis Gordon for the Heraldic shields.

Miss Mabel Dawson for the Tempera Panels in the Hall.

Miss Joan Henderson for the handwoven dorsal.

Miss Ivy Gardiner for the painted pelmet in the Chapel.

Miss Gladys A. Wyllie for the Altar Frontal and Banners.

Miss Margaret Chilton for the Stained Glass figures.

Mr Ralph Cowan for painted glass symbols of the saints.

Mr Alick Woffenden for the pottery flower vase.

Miss Louisa M. Chart for the Fair Linen on the Altar.

Miss Hebden for the Fair Linen on the Credence Table.

Mr Omar Ramsden for Silver Cross and Candlesticks.

Mr K. O. B. Young for Silver Chalice and Paten.

Mrs Mabel A. Lumsden for plaster crucifix, and drawing of the building, as reproduced on the cover of this brochure.

The furniture for the Hall has been generously loaned by Messrs H. & A. G. Alexander, Glasgow, and that for the Sanctuary by Mr Thomas Wilson.

We are also indebted to the Cambridge University Press for the gift of 50 Prayer books and English Hymnal; and to many others for the loan of pictures, plate, models and vestments displayed in the Hall.

THE EPISCOPAL CHURCH IN SCOTLAND.

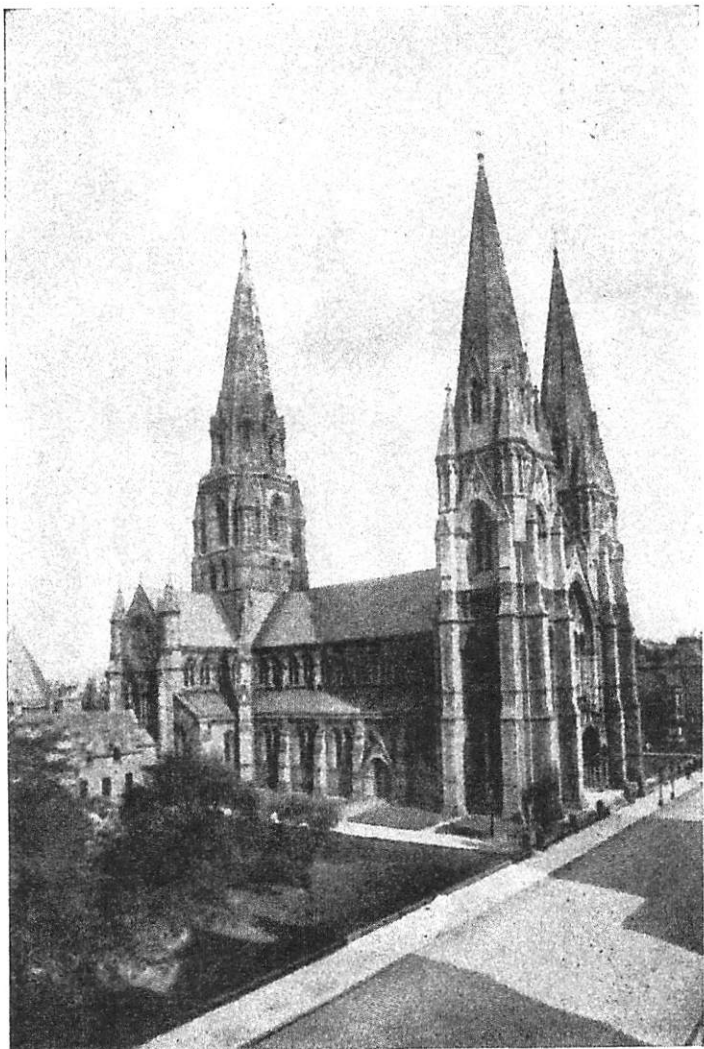
The stained glass windows in the Chapel depict the three Apostles of Scotland, Saints Ninian, Kentigern and Columba, together with St. Patrick, a native of Clydeside.

Celtic Christianity was monastic in government but Episcopal in order. The Church in Scotland was never in the jurisdiction of Canterbury, though at times York claimed some rights in Galloway. From the time of St. Margaret it became increasingly papal. Gross corruption in the middle ages led to proportionate reaction at the Reformation, and for years great confusion prevailed. Episcopacy was established by James VI. (James I. of England), but as in England the Church was overthrown with Charles I. Episcopacy was restored by Charles II. The one outstanding figure of this restored Episcopacy was Archbishop Leighton of Glasgow.

On the accession of William and Mary the Scottish bishops refused to abjure their oath of allegiance to the House of Stuart, and the Episcopal Church was disestablished and disendowed, and subjected for a number of years to great disabilities, being gradually reduced as Sir Walter Scott said "to the shadow of a shade." It was during this period that the Church in Scotland gave a bishop to America in Dr Seabury, Consecrated at Aberdeen on November 14th, 1784.

In the nineteenth century with restored liberty of worship it grew to its present strength. The Episcopal College throughout the penal years of the eighteenth century had been careful to maintain the succession of bishops; and eventually the sees were restored to the present number of seven.

Thus the Episcopal Church in Scotland is a province of the Church in full Communion with the Churches of England, Wales and Ireland, like them Catholic, Apostolic, Episcopal and Reformed.



St. Mary's Cathedral, Edinburgh.

THE CITY OF ABERDEEN

ST. ANDREW'S CATHEDRAL, King Street.

H.C. 8 a.m., 9 a.m. (sung) and 12 noon. Mattins 11 a.m.,
Evensong 6.30 p.m.

St. Clement, Regent Quay.

H.C. 8 a.m. and 11 a.m. (sung). Evensong 6.30 p.m.

St. James, Holburn Junction.

H.C. 8 a.m. (2nd and 4th). Mattins 11 a.m. Evensong 6.30 p.m.

St. John, Crown Street.

H.C. 8 a.m. M. or H.C. 11 a.m. Evensong 6.30 p.m.

St. Margaret, Gallowgate.

H.C. 8 a.m. and 11 a.m. (sung). Evensong 6.30 p.m.

St. Mary, Carden Place.

H.C. 8 a.m. Mattins 11 a.m. Evensong 6.30 p.m.

St. Paul, Loch Street.

H.C. 8 a.m. Mattins 11 a.m. Evensong 6.30 p.m.

St. Peter, Victoria Road, Torry.

H.C. 8 a.m. Mattins 11 a.m. Evensong 6 p.m.

THE CITY OF DUNDEE

ST. PAUL'S CATHEDRAL, Castlehill.

H.C. 8 a.m., 9.30 a.m. (sung). Mattins 11 a.m. Evensong 6.30 p.m.

St. John Baptist, Albert Street.

H.C. 8 a.m., 9 a.m., 11 a.m. (sung). Evensong 6.30 p.m.

St. Luke, Strathmartine.

H.C. 8.30 a.m. M. or H.C. (sung) 11 a.m. Evensong 6.30 p.m.

St. Margaret, Ancrum Road, Lochee.

H.C. 8 a.m. and 11 a.m. (sung). Evensong 6 p.m.

St. Martin.

H.C. 8 a.m., 9 a.m. M. 11 a.m. E. 6.30 p.m.

St. Mary Magdalene, Blinshall Street.

H.C. 8 a.m. Mattins 11 a.m. Evensong 6.30 p.m.

St. Roque, Blackscroft.

H.C. 8 a.m. and 9 a.m. Evensong 6.30 p.m.

St. Salvador, Church Street.

H.C. 8 a.m., 9.15 a.m. and 11 a.m. (sung). Evensong 6.30 p.m.

THE CITY OF EDINBURGH

ST. MARY'S CATHEDRAL, Palmerston Place.

H.C. 8 a.m., 9 a.m. and after Mattins. M. 11 a.m. E. 3.30 p.m.
and 6.30 p.m.

All Saints, Brougham Street.

H.C. 8 a.m. and 11.30 a.m. (sung). Evensong 6.30 p.m.

St. Aidan, Niddrie Mains.

M. 8.30 a.m. H.C. 9 a.m. Evensong 6.30 p.m.

St. Andrew, Holyrood Road.

H.C. 8.30 a.m. and 11.15 a.m. (sung). M. 10.45 a.m. E. 6.30 p.m.

Christ Church, Morningside.

H.C. 8 a.m. and 12.15 a.m. Mattins 11 a.m. Evensong 6.30 p.m.

Christ Church, Trinity Road.

H.C. 8 a.m. Mattins 11 a.m. Evensong 6.30 p.m.

St. Columba, Johnston Terrace.

H.C. 8 a.m. and 11 a.m. (sung). Evensong 6.30 p.m.

St. Cuthbert, Colinton (car terminus).

H.C. 8 a.m. M. or H.C. 11 a.m. Evensong 6 p.m.

Good Shepherd, Murrayfield.

H.C. 8 a.m. Mattins 11 a.m. Evensong 6.30 p.m.

Holy Cross, Davidson's Mains.

H.C. 8 a.m. Mattins 11 a.m. Evensong 6.30 p.m.

St. James, Inverleith Row.

H.C. 8 a.m. Mattins 11 a.m. Evensong 6.30 p.m.

St. James, Constitution Street, Leith.

H.C. 8 a.m. Mattins 11 a.m. Evensong 6.30 p.m.

St. John Evangelist, Princes Street.

H.C. 8 a.m. and 12.15 a.m. Mattins 11 a.m. Evensong 7 p.m.

St. Margaret, Corstorphine.

H.C. 8 a.m. Mattins 11 a.m. Evensong 6.30 p.m.

St. Margaret, Easter Road.

H.C. 8 a.m. Mattins 11 a.m. Evensong 6.30 p.m.

St. Mark, High Street, Portobello.

H.C. 8 a.m. and 10.15 a.m. (sung). Mattins 11.15 a.m. E. 6.30 p.m.

St. Martin, Tynecastle.

H.C. 8 a.m. Mattins 11 a.m. Evensong 6.30 p.m.

St. Matthew, Abbeyhill.

H.C. 9 a.m. and 11.15 a.m. (sung). Evensong 6.30 p.m.

St. Michael, Hill Square.

H.C. 8 a.m. and 11 a.m. (sung). Evensong 6.30 p.m.

St. Ninian, Comely Bank.

H.C. 8 a.m. Mattins 11 a.m. Evensong 6.30 p.m.

Old St. Paul, Carrubber's Close.

H.C. 8 a.m., 10 a.m. (sung), 11 a.m. (sung). Evensong 6.30 p.m.

St. Paul and St. George, York Place.

H.C. 8 a.m. and 9.30 a.m. Mattins 11 a.m. Evensong 6.30 p.m.

St. Peter, Lutton Place.

H.C. 8.30 a.m. Mattins 11 a.m. Evensong 6.30 p.m.

St. Salvador, Stenhouse.

H.C. 9 a.m. Evensong 6.30 p.m.

St. Vincent, St. Stephen Street.

THE CITY OF GLASGOW

WEST.

ST. MARY'S CATHEDRAL, Great Western Road, W.2. (near Kelvinbridge Underground).

H.C. 8 a.m., 9 a.m. (sung) and 12.15 p.m. M. 11 a.m. E. 6.30 p.m.

All Saints, Woodend Drive, Jordanhill, W.3.

H.C. 8.15 a.m. Mattins 11 a.m. Evensong 6.30 p.m.

St. Bride, Hyndland Road, W.2. (Opposite Hyndland Station).

H.C. 8 a.m. and 11 a.m. (sung). Evensong 6.30 p.m.

St. David, Scotstoun, W.4.

H.C. 9 a.m. and 11 a.m. Mattins 10 a.m. Evensong 6.30 p.m.

Holy Cross, Great Western Road, Knightswood, W.3. (on Boulevard).

H.C. 8 a.m. and 10 a.m. (sung). M. 11.15 a.m. E. 6.30 p.m.

St. Silas (Proprietary Chapel), Park Road.

Mattins 11 a.m. Evensong 6.30 p.m.

NORTH.

St. George, Sandbank Street, Maryhill, N.W.

H.C. 8 a.m., 9 a.m. (2nd and 4th). M. 11 a.m. E. 6.30 p.m.

Holy Trinity, 1016 Cumbernauld Road, Riddrie.

M. 8 a.m. H.C. 8.30 a.m., 11 a.m. (sung). E. 6.30 p.m.

St. James, Mollinsburn Street, Springburn, N.

H.C. 9 a.m. Mattins 11 a.m. Evensong 6.30 p.m.

St. Matthew, Balmore Road, Possilpark, N.

H.C. 9 a.m. Mattins 11 a.m. Evensong 6.30 p.m.

CENTRE.

St. Andrew's-by-the-Green, Greendyke Street, C.1.

H.C. 9 a.m. Mattins 11 a.m. Evensong 6.30 p.m.

St. John, Houldsworth Street, Cranstonhill, C.3 (off Argyle Street).

H.C. 8 a.m., 9.30 a.m. and 11 a.m. (sung). M. 10.30 a.m. E. 6.30 p.m.

St. Luke, Grafton Street, C.1. (off Cathedral Street).

H.C. 8 a.m. Mattins 11 a.m. Evensong 6.30 p.m.

St. Peter. St. Peter's Street, C.4 (near St. George's Cross).

H.C. 8 a.m. and 9 a.m. (sung). M. 11 a.m. E. 6.30 p.m.

St. Saviour, Port Dundas Road, C.4 (near Buchanan Street).

H.C. 8.30 a.m. and 9.30 a.m. (sung). Evensong 6.30 p.m.

EAST.

St. Barnabas, Craigpark, Dennistoun, E.1.

H.C. 8.30 a.m. Mattins 9.15 a.m. H.C. 11 a.m. (sung). E. 6.30 p.m.

Christ Church, Brook Street, Mile-end, S.E. (near Bridgeton Cross).

H.C. 8 a.m., 9.30 a.m. and 11 a.m. (sung). Evensong 6.30 p.m.

St. Columba, Baltic Street, Bridgeton, S.E.

H.C. 9 a.m. and 11 a.m. Evensong 6.30 p.m.

St. Cuthbert, Elcho Street, Gallowgate, S.E.

H.C. 9 a.m. Evensong 6.30 p.m.

St. John, Baillieston (at end of Boulevard).

H.C. 7.45 a.m., 8.30 a.m. and 11.30 a.m. (sung). E. 6.30 p.m.

St. Paul, Sorby Street, Parkhead, E.1 (near Parkhead Cross).

H.C. 8.30 a.m. Mattins and H.C. 11 a.m. Evensong 6.30 p.m.

St. Serf, 1464 Shettleston Road, Shettleston, E.2.

H.C. 8.45 a.m. Mattins or H.C. 11.30 a.m.

St. Stephen, Melrose Avenue, Rutherglen.

H.C. 8.30 a.m. Mattins or H.C. 11.15 a.m. Evensong 6.30 p.m.

SOUTH.

St. Aidan, Old Mearns Road, Clarkston (at Car Terminus).

H.C. 8.30 a.m. Mattins or H.C. 11 a.m. Evensong 6.30 p.m.

Church of the Ascension, Mosspark Drive, Mosspark, S.W.2.

H.C. 8.30 a.m. Mattins 11 a.m. Evensong 6.30 p.m.

St. Gabriel, Greenfield Street, Govan, S.W.1.

H.C. 9 a.m. Mattins or H.C. 11 a.m. Evensong 6.30 p.m.

St. Margaret, Kilmarnock Road, Newlands, S.3.

H.C. 8 a.m. and 12.15 p.m. Mattins 11 a.m. Evensong 6.30 p.m.

S. S. Margaret and Mungo, Rutherglen Road, C.5.

H.C. 8 a.m. and 11 a.m. (sung). Evensong 6.30 p.m.

St. Mark, Scotland Street, Kinning Park, S.1 (near Kinning Park Underground).

H.C. 8.30 a.m. and 9.45 a.m. (sung). M. or H.C. 11 a.m. E. 6.30 p.m.

St. Martin, Dixon Avenue, Polmadie, S.2.

H.C. 8.15 a.m., 9 a.m. and 11 a.m. (sung). Evensong 6.30 p.m.

St. Michael, Whitefield Road, Govan, S.W.1 (near Cessnock Underground).

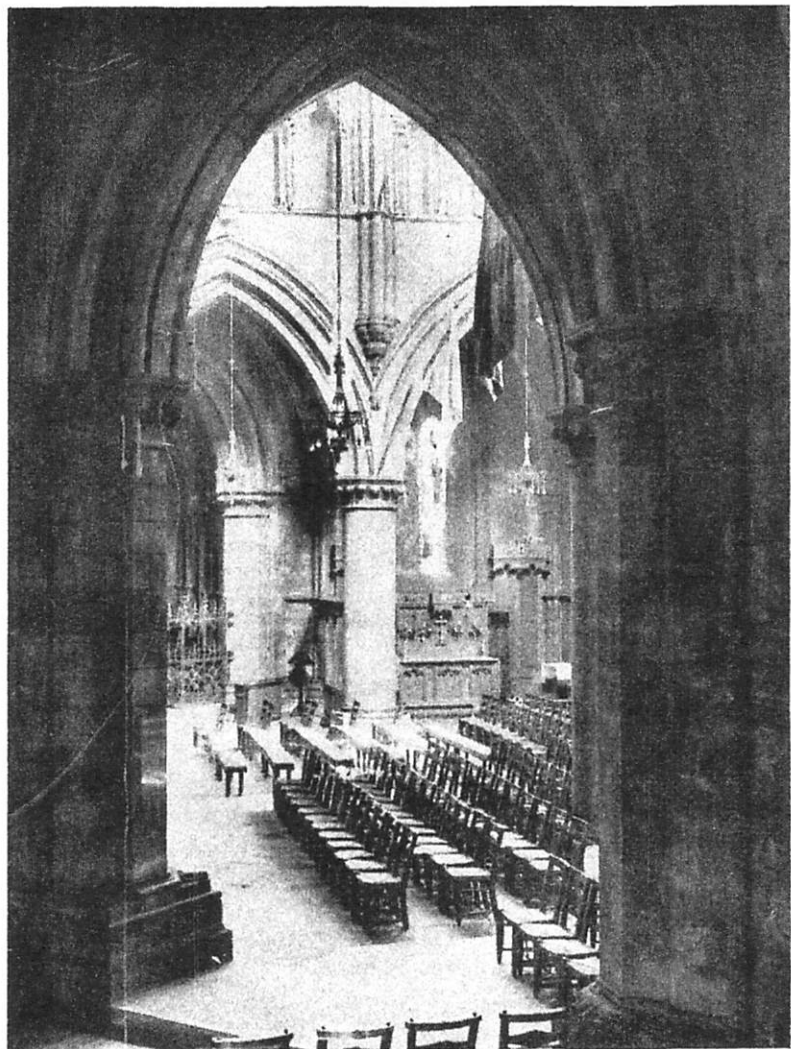
H.C. 8.30 a.m. Mattins 11 a.m. Evensong 6.30 p.m.

St. Ninian, Albert Drive, Pollokshields, S.1 (near Eglinton Toll).

H.C. 8 a.m. and 9 a.m. Mattins 11 a.m. Evensong 6.30 p.m.

St. Oswald, Castlemilk Road, King's Park, S.4.

H.C. 8 a.m. Mattins or H.C. 11 a.m. Evensong 6.30 p.m.



A Glimpse of the War Memorial Chapel in St. Mary's.

	H.C. Said	H.C. Sung	Mattins	Even- song
Aberchirder				
St. Marnan	8.30	—	11.0	6.0
Aberdeen				
See page 5				
Aberdour				
St. Columba	—	10 or	11.0	—
Aberfeldy				
St. Margaret	8.30	—	12.0	6.0
Aberfoyle				
St. Mary	8.30	—	11.30	4.0
Aberlour				
St. Margaret	8.0	11.30	11.30	6.0
Aboyne				
St. Thomas	8.30	—	11.15	6.0
Airdrie				
St. Paul	8.30	11.30	11.30	6.30
Alexandria				
St. Mungo	8.0	—	11.30	6.30
Alford				
St. Andrew	8.0	—	11.30	6.0
Alloa				
St. John	8.30	—	11.15	6.30
Alyth				
St. Ninian	8.30	—	11.15	6.0
Annan				
St. John	8.0	—	11.0	6.0
Arbroath				
St. Mary	8.0	—	11.0	6.0
Ardrossan				
St. Andrew	8.0	—	11.15	6.30
Arpafellie		(1st & 3rd		
St. John (2nd & 4th	8.30)	11.0)		3.0
Auchindoir				
St. Mary (Summer Chaplaincy)	11.0	—	11.0	6.0
Auchterarder				
St. Kessog	8.30	—	11.30	6.30
Ayr				
Holy Trinity	8.0	9.30	11.0	6.30
Ballachulish				
St. John	8.30	—	11.30	6.30
Ballater				
St. Saviour	8 & 11	—	11.0	6.0
Ballintuim	8.30 &			
(July, Aug., Sept.)	12.0	—	11.0	6.30
Banchory				
St. Ternan	8.0	—	11.30	6.0
Banff				
St. Andrew	8.0	—	11.0	6.30
Bearsden				
All Saints	8.0	—	11.0	6.30

	H.C. Said	H.C. Sung	Mattins	Even- song
Bieldside				
St. Devenick	8.30 or 9.15	—	11.0	6.0
Blairgowrie				
St. Catharine	8.30	—	11.15	6.0
Bo'ness				
St. Catharine	8.0	—	12.0	6.30
Braemar				
St. Margaret (May to Oct.)	8.0 & 12.0	—	11.0	6.0
Brechin				
St. Andrew	8.0	—	11.0	6.0
Bridge of Allan				
St. Saviour	8.0	—	11.15	6.30
Bridge of Weir				
St. Mary (bimonthly	8.0)	—	10.15	—
Brora				
St. Columba (Aug. and Sept.)	8.30	—	11.30	—
Broughty Ferry				
St. Mary	8.30	—	11.0	6.30
Buckie				
All Saints	8.30	—	11.0	6.0
Bucksburn				
St. Machar	8.0	—	11.15	6.15
Burntisland				
St. Serf	8.0	11.30	11.0	6.30
Burravoe				
St. Colman	9.0	—	11.15	6.0
Callander				
St. Andrew	8.0	—	11.15	6.15
Campbeltown				
St. Kiarnan	8.30	11.15		6.30
Carnoustie				
Church of Holyrood	8.0	—	11.15	6.15
Castle Douglas				
St. Ninian	8.0	—	11.30	6.0
Challoch				
All Saints	—	—	11.30	—
Clydebank				
St. Columba	8.30	9.30	11.30	6.30
Coatbridge				
St. John	8.30 & 10.30	11.30	8.0	6.30
Coldstream				
St. Mary and All Souls	8.0	11.0	11.0	6.0
Comrie				
St. Fillan	8.0	11.0	—	6.30
Coupar Angus				
St. Anne	8.30	—	11.15	6.0

	H.C. Said	H.C. Sung	Mattins	Even- song
Crieff				
St. Columba and St. Michael	8.0	—	11.15	6.30
Cromarty				
St. Regulus	—	10.0	—	8.0 (1st Sun.)
Cruden				
St. James	8.30	—	11.0	5.30
Cullen				
St. Mary	—	—	11.0	6.0
Culross				
St. Serf	8.30	—	11.15	—
Cuminestown				
St. Luke	8.0	—	11.15	6.0
Cupar				
St. James	8.0	—	11.0	6.0
Dalbeattie				
Christ Church	8.30	—	11.15	6.0
Dalmahoy				
St. Mary	8.30 & 12.0	—	11.0	6.30
Dalry				
St. Peter (bimonthly)	9.0)	—	11.0	6.30
Deer				
St. Drostan	8.0	—	11.15	3.0
Dingwall				
St. James	8.0	—	12.0	6.30
Dollar				
St. James	8.30	—	11.15	6.30
Dornoch				
St. Finnbarr (July, Aug., and Sept.)	8.15	—	11.0	6.0
Doune				
St. Modoc	8.0	—	11.30	6.0
Drumtochty				
St. Palladius	—	11.0	11.0	—
Dufftown				
St. Michael	8.30	—	11.30	6.0
Dumbarton				
St. Augustine	8.0	—	11.15	6.0
Dunfermline				
Holy Trinity	8.0	—	11.0	6.30
Dumfries				
St. John	8.0	—	11.0	6.30
Dunbar				
St. Anne	8.0	—	11.15	6.0
Dunblane				
St. Mary	8.0	11.15	11.15	6.30
DUNDEE—See page 5				
Dunkeld				
St. Mary	8.30	—	11.30	6.30
Dunoon				
Holy Trinity	8.30	11.15	11.15	6.30

	H.C. Said	H.C. Sung	Mattins	Even- song
Duns				
Christ Church	8.0	—	11.30	6.0
Duror				
St. Adamnan	8.30	—	11.30	6.30
EDINBURGH See page 6				
Elgin				
Holy Trinity	8.0	—	11.0	6.0
Elie				
St. Michael	8.0	—	11.15	6.0
Ellon	8.0			
St. Mary	2nd & 4th	—	11.0	5.45
Eyemouth				
St. Ebba	8.0	11.10	11.10	5.40
Falkirk				
Christ Church	9.0	—	11.15	6.30
Fettercairn				
St. Andrew	—	—	11.0	—
Fochabers (Aug. & Sept.)				
Gordon Castle Chapel	8.30	—	11.0	6.0
Folla Rule				
St. George	8.0	—	11.0	6.30
Forfar				
St. John	8.0	—	11.0	6.0
Forgue				
St. Margaret	8.15	—	11.0	6.0
Forres				
St. John	8.0	—	11.0	6.0
Fortrose				
St. Andrew	8.30	11.30	—	6.0
Fort William				
St. Andrew	8.0	11.0	11.0	6.30
Fraserburgh				
St. Peter	8.0	—	11.0	6.0
Fyvie				
See under Woodhead				
Galashiels				
St. Peter	8.0	—	11.0	6.0
Girvan				
St. John	8.30	11.15	10.45	6.30
GLASGOW. See page 8				
Glencarse				
All Saints	8.0	9.30 or 11.0	—	—
Glencoe				
St. Mary	8.30	—	11.30	6.30 Gaelic
Glenurquhart				
St. Ninian (Aug. & Sept.)	8.30	—	11.0	6.0
Gourock				
St. Bartholomew	8.0	—	11.0	6.30

	H.C. Said	H.C. Sung	Mattins	Even- song
Grangemouth				
St. Mary	8.30	—	11.15	6.30
Grantown				
St. Columba	8.0	11.0	11.0	6.0
Greenock				
St. John, Union Street	8.0	—	11.0	6.30
Gretna				
All Saints	8.0	11.0	11.0	6.30
Gullane				
St. Adrian	8.0	—	11.0	6.0
Haddington				
Holy Trinity	8.0	—	11.0	6.0
Hamilton				
St. Mary	8.0	11.15	—	6.30
Hawick				
St. Cuthbert	8.0 & 12.0	—	11.0	6.0
Helensburgh				
St. Michael & All Angels	8.0	—	11.0	6.30
Huntly				
Christ Church	8.30	—	11.0	6.0
Inveraray				
All Saints	8.30	11.0	8.0	6.0
Invergordon				
St. Ninian	8.0	—	11.0	6.0
Invergowrie				
All Souls	8.30	11.45	11.30	—
Inverkeithing				
St. Peter	8.30	11.0	11.0	6.0
INVERNESS Cathedral	8.15	9.0	11.0	6.30
St. Michael	8.30	11.0	10.30	6.30
St. John	8.30	—	11.0	6.30
Inverurie				
St. Mary	8.30	—	11.0	5.0
Insch				
St. Drostan	—	—	11.0	6.0
Iona				
Bishop's Chapel (June 14-Aug 31)	8.0 daily	—	—	—
Islay				
St. Columba, Bridgend (Aug.-Sept.)	11.0	—	11.0	—
Jedburgh				
St. John	8.0	11.30	11.15	6.30
Johnstone				
St. John	9.0	—	11.15	6.30

	H.C. Said	H.C. Sung	Mattins	Even- song
Keith				
Holy Trinity	8.0	—	11.0	6.0
Kelso				
St. Andrew	8.30	—	11.15	6.30
Kemnay				
St. Anne (2nd Sunday	9.0)	—	—	6.30
Kilmacolm				
St. Fillan (bimonthly	8.0)	11.45	11.45	6.30
Kilmarnock				
Holy Trinity	8.0	—	11.0	6.30
Kilmaveonaig				
St. Adamnan (July, Aug., Sept.)	8.30	—	11.0	6.0
Kincardine O'Neil				
Christchurch	8.0	—	11.30	—
Kinghorn				
St. Leonard (2nd Sunday)	—	9.0	—	6.30
Kingussie				
St. Columba (July, Aug., Sept.)	8.30	—	11.0	6.0
Kinlochleven				
St. Paul	—	10.0	—	4.0
Kinloch Moidart				
St. Finnan (Summer only)	—	—	—	—
Kinloch Rannoch				
All Saints (July, Aug., Sept.)	8.30	—	11.30	5.0
Kinross				
St. Paul	8.0	—	11.30	6.0
Kirkcaldy				
St. Peter	8.0	—	11.0	6.0
Kirkcudbright				
Greyfriars	8.30	—	11.15	6.15
Kirkwall				
St. Olaf	8.30	—	11.15	6.15
Kirriemuir				
St. Mary	8.0	11.15	11.15	6.15
Lanark				
Christ Church	8.0	—	11.15	6.15
Langholm				
All Saints	8.30	—	11.30	6.0
Largs				
St. Columba	8.0	—	11.15	6.15
Lasswade				
St. Leonard	8.30	—	11.0	6.0
Laurencekirk				
St. Laurence	8.0	—	11.0	6.0
Lenzie				
St. Cyprian	8.0	—	11.0	6.30
Lerwick				
St. Magnus	—	11.0	10.30	6.15
Leven				
St. Margaret	8.0	11.30	11.0	6.30

	H.C. Said	H.C. Sung	Mattins	Even- song
Linlithgow				
St. Mildred		10.30	—	6.30
Lochgilphead				
Christ Church	9.30	—	11.0	6.30
Lockerbie				
All Saints	8.30	—	11.30	6.30
Longside				
St. John	8.15	—	11.15	6.0
Lossiemoth				
St. Margaret (August)	8.30	—	11.0	—
other Months	9.30	—	—	—
	2nd Sun.			
Meldrum				
St. Matthew	8.0	—	11.30	5.30
Melrose				
Holy Trinity	8.30	—	11.30	6.0
MILLPORT				
Cathedral of Holy Spirit	8.0	11.0	11.0	6.30
Milngavie				
St. Andrew	8.30	—	11.0	6.30
Moffat				
St. John	8.0	—	11.0	6.0
Monifieth				
Holy Trinity	8.30	11.0	11.0	6.30
Montrose				
St. Mary & St. Peter	8.0	11.50	11.0	6.0
Motherwell				
Holy Trinity	8.15	9.15	11.30	6.30
Muchalls				
St. Ternan	8.0	—	11.15	6.0
Musselburgh				
St. Peter	8.30	—	11.15	6.30
Muthill				
St. James	8.15	—	11.30	6.0
Nairn				
St. Columba	8.0	—	11.0	6.0
Nether Lochaber				
St. Bride (June & Sept.)	8.30	11.30	—	6.30
Newburgh				
St. Katharine	8.0 or 9.30	—	—	3.0 or 6.30
New Pitsligo				
St. John	8.30	—	11.0	6.0
Newport				
St. Mary	8.30	—	11.0	6.30
Newton Stewart				
Chapel of Ease	8.30	—	—	6.0
North Berwick				
St. Baldred	8.0	—	11.0	6.0
Oban				
Cathedral (St. John)	8.0	11.30	11.0	6.30

	H.C. Said	H.C. Sung	Mattins	Even- song
Old Deer				
See under Deer				
Old Meldrum				
See Under Meldrum				
Paisley				
Holy Trinity, Love St.	8.30	9.30	11.15	6.30
St. Barnabas	8.0	—	11.0	6.30
Peebles				
St. Peter	8.0	11.0	11.0	6.0
Penicuik				
St. James	8.0	—	11.0	6.30
PERTH Cathedral				
St. Ninian	8.0	9.0	11.0	6.30
St. John	8.0 & 12.0	—	11.0	6.30
Peterhead				
St. Peter	8.30	—	11.0	6.0
Pitlochry				
Holy Trinity	8.0	—	11.30	6.0
Pittenweem				
St. John	8.30	—	11.0	—
Port Glasgow				
St. Mary, Robert Street	8.0	11.0	11.0	6.30
Port Patrick				
St. Ninian (2nd Sunday	10.15)	—	—	3.0
Portree				
St. Columba (Summer)	8.30	—	11.0	9.0
Portsoy				
St. John Baptist	8.30	—	11.0	6.0
Prestwick				
St. Ninian	8.45	—	11.15	6.30
Queensferry (South)				
Priory Church of St. Mary	8.0	—	11.0	6.0
Renfrew				
St. Margaret	8.15	10.0	11.30	6.30
Rothiemurchus				
St. John Baptist (June, July, Aug., Sept.)	8.30	—	11.0	6.0
Rosslyn Chapel				
St. Matthew	8.30	—	11.30	3.30
Rosyth				
S.S. Andrew & George	8.0	11.0	11.0	6.0
Rothsay				
St. Paul	8.30	11.0	—	6.30
St. Andrews				
All Saints	8.0	10.0	—	6.0
St. Andrew, Queens Gardens	8.0	—	11.0	6.0

			H.C. Said	H.C. Sung	Mattins	Even- song
Selkirk						
St. John	8.30	—	11.15	6.15
Stanley						
Mission Hall	enquire	—	11.30	—
Stirling						
Holy Trinity	8.0	—	11.0	6.30
Stonehaven						
St. James	7.30 or 8.0	—	11.0	6.0
Stornoway						
St. Peter	8.30	11.0	11.0	7.0
Stranraer						
St. John	9.0	—	12.0	6.30
Strathnairn						
St. Paul, Aug., Sept.)		12.0	—	11.0	—
Strathpeffer						
St. Anne	8.30	10.30	10.30	5.0
Strathtay						
St. Andrew	—	10.30	10.30	—
Strichen						
All Saints (except 1st			8.0)	—	11.0	6.30
Stromness						
St. Mary	8.40 2nd Sun.	—	11.15	6.30
Tain						
St. Andrew	8.30	—	11.15	6.30
Tayport						
St. Margaret	9.0	—	11.0	6.0
Thurso						
St. Peter	8.30	—	11.30	6.30
Torry.	See Aberdeen City page 5					
Troon						
St. Ninian	8.0	—	11.0	6.30
Turriff						
St. Congan	8.0	11.0	11.0	6.0
Uddingston						
St. Andrew	8.30	—	11.30	6.30
West Linton						
St. Mungo	8.15	—	11.30	6.0
Wick						
St. John	9.0	—	11.30	6.30
Wishaw						
St. Andrew	8.30	—	11.0	6.30
Woodhead						
All Saints	8.0 or 12.0	—	11.15	6.30